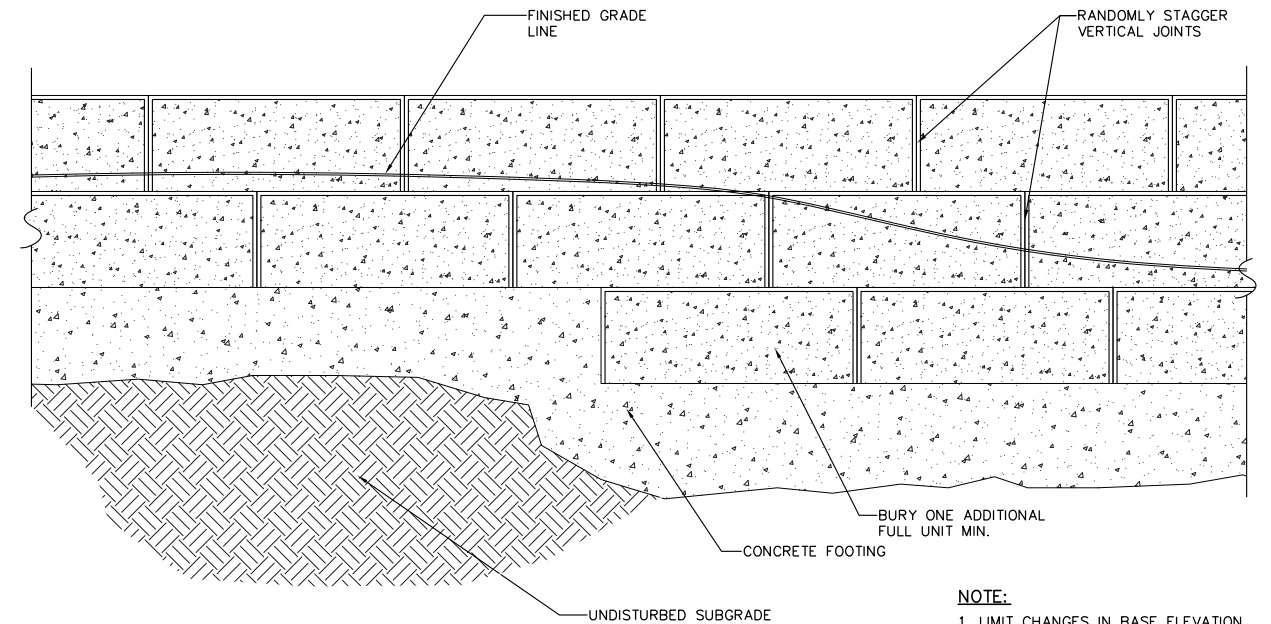


CAPPING DETAIL—PROFILE
STEP AT TOP OF WALL
SCALE: NONE

- GENERAL NOTES FOR CAPPING**
1. CAPS SHALL BE ADHERED TO WALL USING CONCRETE ADHESIVE.
 2. CAPS MAY BE PLACED WITH A 1/2" TO 3/4" OVERHANG OF TOP COURSE.
 3. WHEN SPLITTING CAP UNIT FOR WALL END DO NOT USE A CAP SECTION LESS THAN 6" WIDE.
 4. DO NOT OVERHANG CAP AT END OF COURSE MORE THAN 1".

SECTION: BLOCK RETAINING WALL WITH CAP
(16"x6"x12" BLOCK) CAPPING PROFILE

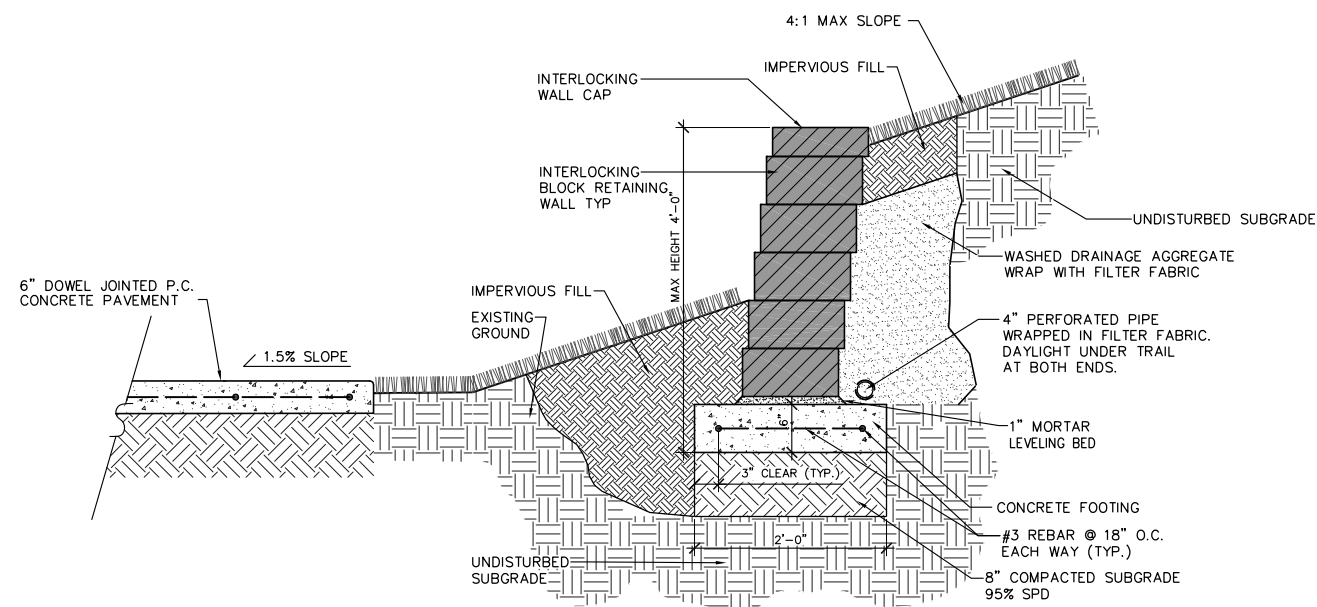
A
NOT TO SCALE



- NOTE:**
1. LIMIT CHANGES IN BASE ELEVATION TO 6" PER STEP TO AVOID DIFFERENTIAL SETTLEMENT
 2. STEP OFTEN ENOUGH TO MAINTAIN MINIMUM REQUIRED EMBEDMENT

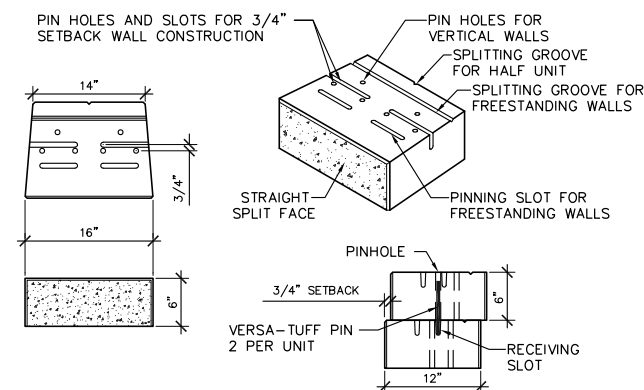
SECTION: BLOCK RETAINING WALL WITH CAP
(16"x6"x12" BLOCK) STEPPING BASE DETAIL

B
NOT TO SCALE



SECTION: BLOCK RETAINING WALL WITH CAP — LESS THAN 4'—0" TALL

C
NOT TO SCALE



SECTION: VERSA-LOK STANDARD UNIT/PINNING

D
NOT TO SCALE

NOTES:

1. BASIS OF DESIGN PRODUCT: INTERLOCKING BLOCK WALLS, DETAILS, AND DESIGN ARE BASED ON VERSALOK STANDARD MODULAR CONCRETE UNITS.
2. REFER TO SPECIFICATIONS.

CITY OF MIDWEST CITY RAILROAD TRAIL — PHASE 2&3

PLANS AND ESTIMATES
PREPARED BY:

DESIGN	BBD	07/22
DRAWN	BBD	07/22
CHECKED	RLS	07/22
APPROVED		

R.L. SHEARS COMPANY, P.C.
Landscape Architects

1522 SOUTH BOULDER AVENUE
TULSA, OKLAHOMA 74119
TEL 918.582.0612 FAX 918.582.0613

**TYPICAL SEGMENTAL WALL
DETAILS (1)**

JP# 33269(04)

SHEET 0005